



Search dmpalarms

## Versatile selection offers reliability and affordability



DMP offers a full range of proximity readers and credentials with a product for virtually every application.

Readers provide:

- High reliability
  - Consistent read-range characteristics
  - Easy installation and use
  - Recognition of over 137 billion unique codes
- Credentials offer:
- Compatibility with all DMP and HID Proximity readers
  - Potted electronics for indoor or outdoor use

## PROXIMITY READERS AND CREDENTIALS FOR DMP PANELS

### READER FEATURES

- Compatible with all DMP Panels
- Easily interfaces with DMP 7073, 7073A, 7173, or 7800 Series keypads, and 734, 734N, or 743N-WiFi Wiegand Interface Modules
- Weatherized enclosures for indoor and outdoor applications
- Mounts directly on metal enclosures without a drop in performance
- Built-in self-test routine at start-up to verify reader operation
- Indicator LED for card read verification
- Low power consumption

### CREDENTIAL FEATURES

- Unaffected by body shielding or environmental conditions
- Strong and flexible for resistance to cracking and breaking
- Applications for individual or vehicle access available



**VISUAL INDICATION**

When a proximity card is presented to the readers, the Red LED flashes Green.

**DIAGNOSTICS**

On reader power-up, an internal self-test routine verifies the setup configuration and initializes the reader operation. An additional external loop-back test allows reader outputs and inputs verification without using additional test equipment.

**INDOOR/OUTDOOR DESIGN**

The readers are sealed in weatherized polycarbonate enclosures designed to withstand harsh environments as well as provide a high degree of vandal resistance. This allows reliable performance anywhere.

**EASILY INTERFACED**

The readers interface with all existing Wiegand protocol access control systems and output data in Wiegand format.

**PROXPOINT® PLUS**

The PP-6005B ProxPoint Plus proximity reader is so small and inconspicuous, you barely know it is there. Sporting an internal beeper and LED, the ProxPoint reader is priced to fit even the tightest budget.

The reader accepts 5 to 16 Volts, covering most voltage requirements. The 5 Volt capability allows existing swipe-type access control installations to easily upgrade to proximity technology, simply by changing the existing reader heads and cards. No rewiring or new cable pulling is necessary. The reader also recognizes over 137 billion unique codes to prevent code grabbing.



**MINIPROX™**

The MP-5365 MiniProx proximity reader boasts a slim design to match any decor. The reader accepts 5 to 16 Volts, so that one model can meet most voltage requirements. The reader also offers an internal beeper and a multi-color LED for audio and visual card read verification. The reader can also recognize over 137 billion unique codes to prevent possible code grabbing. The MP-5365 can mount directly on metal without affecting its performance.



**PROXPRO® II**

In addition to the internal beeper and multi-color LED for audio and visual card-read verification, the PR-5455 ProxPro II proximity reader contains fully potted electronics to prevent damage due to weather and tampering. The ProxPro II features a read range up to nine inches and can mount directly on metal.

The reader accepts 5 to 16 Volts including reverse voltage protection. Linear power supplies are recommended.



**PROXPRO® WITH KEYPAD**

The PR-5355 ProxPro® proximity card reader's weatherproof design and attractive enclosure allows easy mounting indoors or out. The ProxPro Reader features a read range of up to eight inches and can be mounted on glass.

This keypad reader affords high reliability, consistent read range characteristics, and low power consumption in a single, easy-to-install package. It features a multicolor LED, internal or host control of the LED, and a beeper "on/off" switch for silent operation. Also offers a fully integrated personal identification number keypad for heightened security.



**MAXIPROX™**

The MX-5375 MaxiProx reader is ideal for installations incorporating parking control and for long read-range applications. The MaxiProx reader packages all the electronics in one attractive and easy-to-install housing. When used with the ProxPass, the read-range is extended to eight feet. When a proximity card is presented to the reader, the Red LED flashes Green and the beeper sounds. The reader accepts 12 to 24 Volts to meet most voltage requirements.



**THINLINE II®**

The TL-5395 ThinLine II proximity card reader provides the same performance as the MiniProx but with a low-profile appearance. Housed in an industry standard switch plate, this reader is an attractive addition to any office or building. Easily installs on a single-gang electrical box and features replaceable covers.

The reader accepts 5 to 16 Volts, meeting most voltage requirements. Linear power supplies are recommended.



## PROX PATCH™

The DMP Patented 1306P Prox Patch is a small and inconspicuous adhesive proximity transponder that allows end-users to perform codeless arming, disarming and door access. The patented Prox Patch adheres to anything you normally carry with you without the hassle of keeping track of an extra device.



The transponder offers an extremely consistent read range. It is unaffected by body shielding or variable environmental conditions, even when close to keys and coins.

For non-DMP systems, the 1306PW, 26-bit Wiegand credential is available.

## 1145-1-BP KEY FOB WITH BUILT-IN PROX

The 1145-1-BP is a 1-button wireless key fob transmitter that includes a built-in proximity credential for access control. This accessory now meets two requirements - controlling the system for such functions as arming, disarming or panic, as well as being able to arm or disarm via an alarm system or as an access control credential.



## PROXCARD® II

The 1326 ProxCard II Access Card incorporates radio frequency identification electronics into a thin durable polycarbonate package approximately the size of a standard credit card. Thin and flexible enough to be carried in a wallet or on a strap clip, the ProxCard II cards replace the thick, rigid card previously associated with other proximity technologies.

Easily customize ProxCard II cards with multicolored graphics. Apply a self-adhesive photo pouch or PVC overlay and the ProxCard II is also compatible with most photo ID systems.



## PROXKEY® III

The 1346 ProxKey III Proximity keyfob incorporates proximity technology into a device approximately the size of an automobile key. Small and convenient, the ProxKey III is always there when you need it, on your key ring.

Advanced technology allows ProxKey III programming with up to 26 bits of Wiegand formatted information for universal compatibility with all Wiegand reader applications. To also receive a key ring to attach to the keyfob, order 1346-RING.

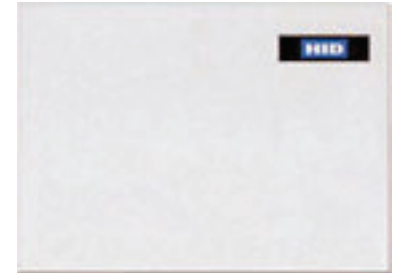


## PROXPASS®

The 1351 ProxPass® from HID is an active tag specifically designed for vehicle access control. The ProxPass, used in conjunction with the MaxiProx®, provides convenient access control for parking and fleet management applications.

The ProxPass tag provides the user with "hands-free" access. With an average read-range of six feet, it adds convenience for users who need to gain access into a parking facility, especially during extreme weather or in a hostile environment.

Company vehicles utilized by multiple employees can be tracked separately from the employees themselves, providing such information as whether the vehicle is on the lot, when it arrived and when it departed.



## ISOPROX® II

The RF programmable ultra-thin 1386 ISOProx II Proximity Card offers proximity technology and photo identification on a single access control card. Made of PVC, the ISOProx card is thin, durable, and flexible.

The ISOProx card combines photo identification with proximity technology. Save time and money by printing a photo ID directly on the ISOProx card with the new generation of photo imaging printers making the photo, cut, paste and lamination process a thing of the past.



# Proximity Readers and Credentials

## CREDENTIAL SPECIFICATIONS

### PROXPATCH™ (PATENTED)

Dimensions 1.275" x 0.060"  
Operating Temp -50°F to 160°F  
Weight 0.004 oz.  
Transmit Freq 125kHz

### 1145-1-BP KEY FOB WITH BUILT-IN PROXPATCH™

Dimensions 1.98" x 1.98" x 0.6"  
Operating Temp -50°F to 160°F  
Transmit Freq 125kHz

### PROXCARD™ II

Dimensions 3.375" x 2.125" x 0.070"  
Operating Temp -50°F to 160°F  
Weight 0.24 oz.  
Transmit Freq 125kHz

### PROXKEY™ III

Dimensions 1.55" x 1.25" x 0.235"  
Operating Temp -50°F to 160°F  
Weight 0.14 oz.  
Transmit Freq 125kHz

### ISOPROX™ II

Dimensions 3.375" x 2.125" x 0.031"  
Operating Temp -50°F to 160°F  
Weight 0.24 oz.  
Transmit Freq 125kHz

### PROXPASS

Dimensions 3.61" x 2.66" x 0.30"  
Operating Temp -22°F to 185°F  
Transmit Freq 125kHz

## CREDENTIALS ORDERING INFORMATION

1145-1-BP Key Fob with Prox Patch  
1306P Prox Patch  
1306PW Prox Patch 26-Bit  
1326 ProxCARD® II Card  
1346 ProxKey® III Keyfob  
1346-RING Key ring for use with 1346 Keyfob  
1386 ISOProx® II Card  
1351 ProxPass®

## PANEL COMPATIBILITY

Proximity Readers are compatible with the DMP XT and XR Series panels.

Proximity Credentials are compatible with all DMP Panels.

## KEYPAD COMPATIBILITY

Readers: 7063, 7063A, 7073, 7073A, 7163, 7173, 7363, 7872, 7873, 9063

## READER SPECIFICATIONS

All readers have the following specifications:

Material Polycarbonate UL 94  
Operating Temp -22°F to 150°F  
Operating Humidity 0 to 95%  
Transmit Frequency 125 kHz

Note: All Current Draw specifications are based upon 12 VDC.

### MINIPROX®

Dimensions 1.275" x 0.060"  
Power Supply 5-16 VDC  
Current Draw  
Average 20mA  
Peak 110mA  
Weight 3.5 oz.

### MAXIPROX®

Dimensions 11.8" x 11.8" x 1"  
Power Supply 12 or 24 VDC  
Current Draw  
Average 200mA  
Peak 700mA  
Weight 51 oz.

### PROXPOINT® PLUS

Dimensions 3.135" x 1.720" x 0.66"  
Power Supply 5-16 VDC  
Current Draw  
Average 30mA  
Peak 75mA  
Weight 2.7 oz.

## PROXPRO® WITH KEYPAD

Dimensions 5" x 5" x 1"  
Power Supply 10-28.5 VDC  
Current Draw  
Average 100mA  
Peak 120mA  
Weight 12 oz.

## PROXPRO® II

Dimensions 5" x 5" x 1"  
Power Supply 5-16 VDC  
Current Draw  
Average 25mA  
Peak 125mA  
Weight 13.6 oz.

## THINLINE® II

Dimensions 4.7" x 3" x 0.68"  
Power Supply 5-16 VDC  
Current Draw  
Average 20mA  
Peak 115mA  
Weight 3.3 oz.

## READER ORDERING INFORMATION

MP-5365 MiniProx® Proximity Reader  
MX-5375 MaxiProx® Proximity Reader  
PP-6005B ProxPoint® Plus Proximity Reader  
PR-5355-AGK14 ProxPro® Proximity Reader with Keypad  
PR-5455 ProxPro® II Proximity Reader  
TL-5395 ThinLine® II Proximity Reader

## READER LISTINGS

All readers have the following listings:

- UL 294
- FCC part 15, United States

In addition, the MiniProx® is listed for UL 1604.

